

Function fittings

Series ISP



Ordering code

ISPC 04 G04

MODEL TYPE

ISPC = Straight male tapered "stop fitting"
ISPC-G = Straight male parallel "stop fitting"
ISPU = Stop fitting straight connector
ISPL = Elbow male tapered "stop fitting"
ISPL-G = Elbow male parallel "stop fitting"

TUBE CONNECTION

4 ... 12 = Tube Diameter Ø 4; 6; 8; 10; 12 mm

THREADED CONNECTION

M5 = M5x0,8
M6 = M6x1
01 = R1/8" tapered
02 = R1/4" tapered
03 = R3/8" tapered
04 = R1/2" tapered
G01 = G1/8" parallel
G02 = G1/4" parallel
G03 = G3/8" parallel
G04 = G1/2" parallel

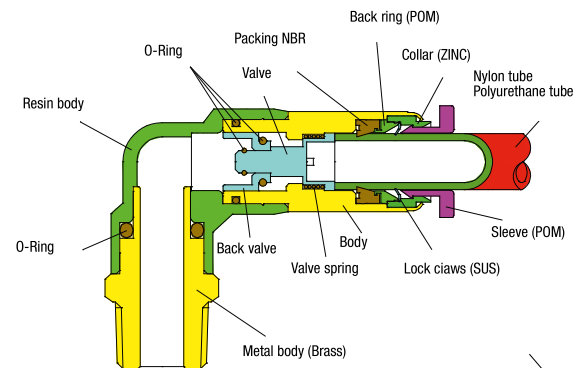
Characteristics

Air flows is stopped from the tube if it is released, the air flows again only after the tube is connected

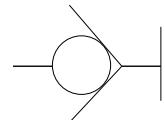
Applications

Used in the place where tube frequently changes

Structure chart



Pneumatic symbol



Technical sheet

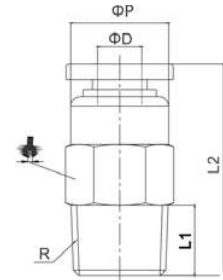
FLUID	Air
OPERATION PRESSURE	0,1-1,0Mpa (150psi)
NEGATIVE PRESSURE	Please contact our Technical Dept.
OPERATING TEMPERATURE	0-60 °C (32-140 °F)
APPLICABLE TUBE	Polyurethane, Polyamide and Nylon

ART. **ISPC**

Straight male tapered stop fitting



COD.	ØD	R	L1	L2	ØP			
ISPC04-01	4	1/8	7,5	27,5	10	10	1	9,30
ISPC06-01	6	1/8	7,5	27,0	12	12	1	11,20
ISPC06-02	6	1/4	9,5	27,0	12	14	1	13,50
ISPC08-01	8	1/8	7,5	29,0	14	14	1	14,40
ISPC08-02	8	1/4	9,5	29,0	14	14	1	16,10
ISPC08-03	8	3/8	10,5	29,0	14	17	1	20,40
ISPC10-02	10	1/4	9,5	37,0	17	17	1	18,80
ISPC10-03	10	3/8	10,5	37,0	17	17	1	24,60
ISPC10-04	10	1/2	13,5	37,0	17	21	1	28,50
ISPC12-02	12	1/4	9,5	38,0	20	21	1	30,20
ISPC12-03	12	3/8	10,5	38,0	20	21	1	31,70
ISPC12-04	12	1/2	13,5	38,0	20	21	1	35,50

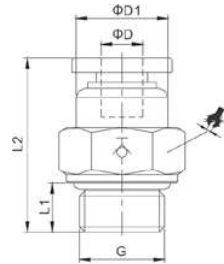


ART. **ISPC-G**

Straight male parallel stop fitting



COD.	ØD	G	ØD1	L1	L2			
ISPC04-G01	4	1/8	10	5,5	27,5	14	1	9,30
ISPC06-G01	6	1/8	12	5,5	27	14	1	11,20
ISPC06-G02	6	1/4	12	7,5	27	17	1	13,50
ISPC08-G01	8	1/8	14	5,5	29	14	1	14,40
ISPC08-G02	8	1/4	14	7,5	29	17	1	16,10
ISPC08-G03	8	3/8	14	7,5	29	20	1	20,40
ISPC10-G02	10	1/4	17	7,5	37	17	1	18,80
ISPC10-G03	10	3/8	17	7,5	37	20	1	24,60
ISPC10-G04	10	1/2	17	10	37	24	1	28,50
ISPC12-G02	12	1/4	20	7,5	38	21	1	30,20
ISPC12-G03	12	3/8	20	7,5	38	21	1	31,70
ISPC12-G04	12	1/2	20	10	38	24	1	35,50

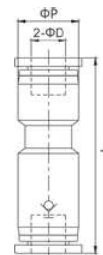


ART. **ISPU**

Stop fitting straight connector



COD.	ØD	ØP	L		
ISPU04	4	13,0	47,0	1	16,50
ISPU06	6	13,0	45,0	1	13,50
ISPU08	8	15,0	49,5	1	17,00
ISPU10	10	19,0	63,0	1	35,00
ISPU12	12	21,5	66,5	1	42,00

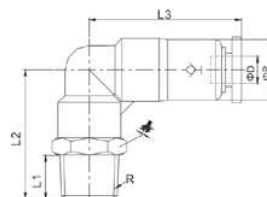


ART. **ISPL**

Elbow male tapered stop fitting



COD.	ØD	R	L1	L2	L3	ØP			
ISPL04-M5	4	M5	3,5	21,3	31,0	13,0	10	1	12,00
ISPL04-M6	4	M6	4,0	21,8	31,0	13,0	10	1	12,00
ISPL04-01	4	1/8	7,5	26,5	31,0	13,0	10	1	14,00
ISPL06-M5	6	M5	3,5	21,7	29,4	13,0	12	1	13,00
ISPL06-M6	6	M6	4,0	22,2	29,4	13,0	12	1	13,00
ISPL06-01	6	1/8	7,5	26,5	30,0	13,0	12	1	20,20
ISPL06-02	6	1/4	9,5	29,0	30,0	13,0	14	1	22,40
ISPL08-01	8	1/8	7,5	29,5	33,5	14,5	14	1	24,60
ISPL08-02	8	1/4	9,5	31,5	33,5	14,5	14	1	29,00
ISPL08-03	8	3/8	10,5	33,0	33,5	14,5	17	1	31,00
ISPL10-02	10	1/4	9,5	37,0	43,2	18,4	17	1	33,00
ISPL10-03	10	3/8	10,5	38,0	43,2	18,4	17	1	35,00
ISPL10-04	10	1/2	13,5	41,5	43,2	18,4	21	1	37,40
ISPL12-02	12	1/4	9,5	38,5	46,7	21,0	21	1	42,00
ISPL12-03	12	3/8	10,5	39,5	46,7	21,0	21	1	45,00
ISPL12-04	12	1/2	13,5	42,5	46,7	21,0	21	1	49,00

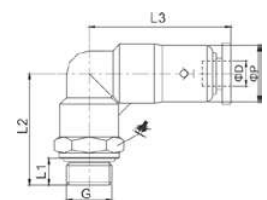


ART. **ISPL-G**

Elbow male parallel stop fitting



COD.	ØD	R	L1	L2	L3	ØP			
ISPL04-G01	4	1/8	5,5	26,5	31,7	13,0	14	1	14,00
ISPL06-G01	6	1/8	5,5	26,5	30,0	13,0	14	1	20,20
ISPL06-G02	6	1/4	7,5	29,0	30,0	13,0	17	1	22,40
ISPL08-G01	8	1/8	5,5	29,0	33,5	14,5	14	1	24,60
ISPL08-G02	8	1/4	7,5	31,5	33,5	14,5	17	1	29,00
ISPL08-G03	8	3/8	7,5	32,0	33,5	14,5	20	1	31,00
ISPL10-G02	10	1/4	7,5	37,0	43,2	18,4	17	1	33,00
ISPL10-G03	10	3/8	7,5	37,0	43,2	18,4	20	1	35,00
ISPL10-G04	10	1/2	10,0	40,5	43,2	18,4	24	1	37,40
ISPL12-G02	12	1/4	7,5	38,5	46,7	21,0	21	1	42,00
ISPL12-G03	12	3/8	7,5	38,5	46,7	21,0	21	1	45,00
ISPL12-G04	12	1/2	10,0	41,5	46,7	21,0	24	1	49,00



Function fittings

Series IPC



Ordering code

IPCVC 04 G04 B

MODEL TYPE

- IPCVC** = Straight male tapered unidirectional fitting
- IPCVC-G** = Straight male parallel unidirectional fitting
- IPCVF** = Tapered male/female unidirectional fitting
- IPCVF-G** = Parallel male/female unidirectional fitting
- IPCVCU** = Unidirectional straight connector

TUBE CONNECTION

4 ... 12 = Tube diameter Ø 4; 6; 8; 10; 12 mm

THREADED CONNECTION

- 01** = R1/8" Tapered thread
- 02** = R1/4" Tapered thread
- 03** = R3/8" Tapered thread
- 04** = R1/2" Tapered thread
- G01** = G1/8" Parallel thread
- G02** = G1/4" Parallel thread
- G03** = G3/8" Parallel thread
- G04** = G1/2" Parallel thread

FLOW RATE DIRECTION

- BLANK** = from thread to tube
- B** = from tube to thread

Features

Allow the airflow in one direction but stops in the opposite direction.

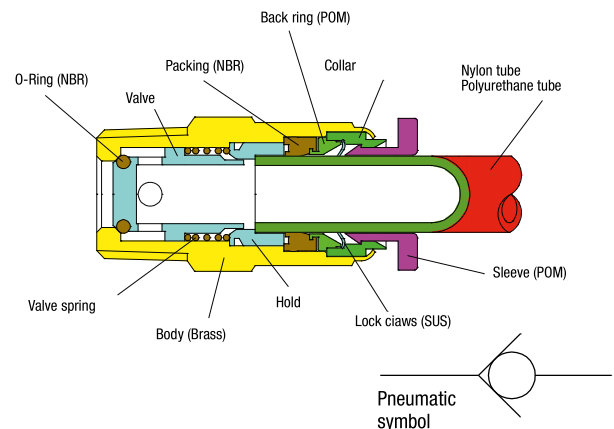
Notes

Tight the thread according to the rule.
It won't work if too tight.

Applications

Check valves allow airflow in one direction

Structure chart



Technical sheet

FLUID	Air (no other gases or liquids)
OPERATION PRESSURE	0,05-1,0Mpa (150psi)
NEGATIVE PRESSURE	Please contact technical Dept.
OPERATING TEMPERATURE	0-60 °C (32-140 °F)
APPLICABLE TUBE	Polyurethane and Nylon

Control method

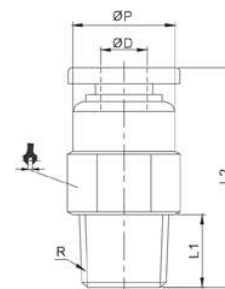
AIR FLOW	METER IN	METER OUT (B)
AIR FLOW	Thread to tube	Tube to thread
PCVC		
PCVF		

ART. **IPCVC**

Straight male tapered unidirectional fitting



COD.	ØD	R	L1	L2	ØP			
IPCVC04-M5	4	M5	3,5	29,2	10	10	1	10,40
IPCVC04-M6	4	M6	4,0	28,2	10	10	1	10,40
IPCVC04-01	4	1/8	7,5	25,0	10	10	1	9,20
IPCVC06-01	6	1/8	7,5	26,0	12	12	1	10,20
IPCVC06-02	6	1/4	9,5	37,0	12	14	1	19,50
IPCVC08-01	8	1/8	7,5	28,5	14	14	1	13,70
IPCVC08-02	8	1/4	9,5	39,0	14	14	1	27,50
IPCVC08-03	8	3/8	10,5	35,2	14	17	1	30,40
IPCVC10-02	10	1/4	9,5	42,9	17	17	1	30,70
IPCVC10-03	10	3/8	10,5	41,6	17	17	1	45,80
IPCVC10-04	10	1/2	13,5	43,7	17	21	1	48,90
IPCVC12-02	12	1/4	9,5	44,2	20	21	1	50,00
IPCVC12-03	12	3/8	10,5	42,5	20	21	1	54,50
IPCVC12-04	12	1/2	13,5	44,5	20	21	1	60,70

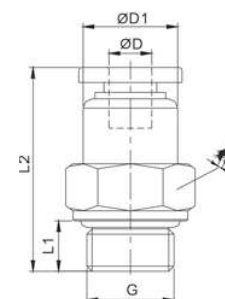


ART. **IPCVC-G**

Straight male parallel unidirectional fitting



COD.	ØD	G	ØD1	L1	L2			
IPCVC04-G01	4	1/8	10,0	5,5	24,4	10	1	9,20
IPCVC06-G01	6	1/8	12,0	5,5	26,0	12	1	10,20
IPCVC06-G02	6	1/4	12,0	7,5	33,0	12	1	19,50
IPCVC08-G01	8	1/8	14,0	5,5	28,5	14	1	13,70
IPCVC08-G02	8	1/4	14,0	7,5	34,8	14	1	27,50
IPCVC08-G03	8	3/8	14,0	7,5	34,8	14	1	30,40
IPCVC10-G02	10	1/4	17,0	7,5	39,5	17	1	30,60
IPCVC10-G03	10	3/8	17,0	7,5	41,6	20	1	45,80
IPCVC10-G04	10	1/2	17,0	10,0	43,7	24	1	48,90
IPCVC12-G02	12	1/4	20,0	7,5	40,3	21	1	50,00
IPCVC12-G03	12	3/8	20,0	7,5	42,3	21	1	54,50
IPCVC12-G04	12	1/2	20,0	10,0	44,4	24	1	60,70

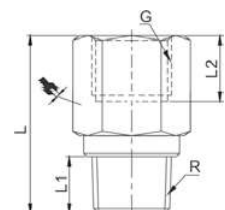


ART. **IPCVF**

Tapered male/female unidirectional fitting




COD.	R	G	L1	L2	L			
IPCVF-01-01	1/8	1/8	7,5	8,5	23,0	14	1	12,50
IPCVF-02-02	1/4	1/4	9,5	11,0	36,0	17	1	14,70
IPCVF-03-03	3/8	3/8	10,5	12,0	32,9	21	1	16,80
IPCVF-04-04	1/2	1/2	13,5	14,0	37,0	24	1	18,80

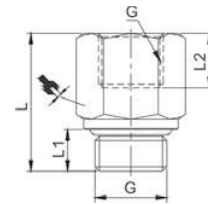


ART. **IPCVF-G**

Parallel male/female unidirectional fitting



COD.	G	L1	L2	L			
IPCVF-01-G01	1/8	5,5	8,5	23,0	14	1	12,50
IPCVF-02-G02	1/4	7,5	11,0	32,0	17	1	14,70
IPCVF-03-G03	3/8	7,5	12,0	32,9	21	1	16,80
IPCVF-04-G04	1/2	10,0	14,0	37,0	24	1	18,80



ART. **IPCVU**

Unidirectional straight connector



COD.	ØD	ØP	L		
IPCVU04	4	11,0	40,4	1	5,70
IPCVU06	6	13,0	41,2	1	6,50
IPCVU08	8	14,5	52,6	1	9,90
IPCVU10	10	21,0	62,2	1	49,40
IPCVU12	12	21,0	63,3	1	46,00

